



Delivering a New Energy

The Hornsea Round 3 Offshore Wind Project

Presentation to PINS

22nd March 2012

Agenda

1. Introductions
2. Actions from previous meeting and monthly telcons
3. Project One Update
 - a. Surveys
 - b. Programme
 - c. Phase 4 Consultation
4. Project Two Update
 - a. Surveys
 - b. Programme
 - c. Phase 1 Consultation
5. PINS Review
 - a. draft DCO
 - b. draft Explanatory Memorandum
 - c. draft plans
 - d. draft Consultation Report
 - e. draft HRA documents
 - f. draft Marine Licence
6. Other key documentation
 - a. Funding Statement
 - b. Statement of Reasons
 - c. Book of Reference
7. Transboundary consultation
8. Interface with other PINS projects
 - a. C.GEN
 - b. Highways Agency
 - c. Able Marine Energy Park
9. DECC 27th Round Appropriate Assessment (Oil & Gas)
10. Approach to decommissioning impacts
11. AOB



Delivering a New Energy

1. Introductions



Delivering a New Energy

2. Actions from Previous Meeting (12th December 2012)

Actions from Previous Meeting (12th December 2012)

1. The Planning Inspectorate to direct SWL to s51 advice regarding Funding Statements and the MMO letter regarding the definition of 'maintain' in DCOs.
2. SWL to make follow-up considerations where appropriate, including updates to dDCO and Explanatory Memorandum. – **incorporated into version issued at Phase 4**
3. The Planning Inspectorate to respond to SWL's query regarding transboundary screening.
4. The Planning Inspectorate to comment on the CIA Strategy document. - **Issued**
5. SWL to provide the Inspectorate with a copy of the draft HRA Report when available and Planning Inspectorate to comment if time and resources allow. – **issued at Phase 4**
6. The Planning Inspectorate to review a final iteration of the dDCO together with Explanatory Memorandum, draft Land Plans and compulsory acquisition documents, and to review the draft Consultation Report.

- Requirement 1 (Detailed design parameters) – The Planning Inspectorate noted the exception of any maximum cable length or cable protection measures. SWL stated that these had been assessed and included in the ES, but would be defined in the dDCO in follow-up to the meeting.
- Requirement 3 (Foundation method) – The Planning Inspectorate acknowledged the assessment of up to four foundation types, but noted the exception of detailed design parameters. SWL stated that these were included in the ES, but would be defined in the dDCO in follow-up to the meeting.
- Requirement 9 – The Planning Inspectorate queried the progress of the Code of Construction Practice. SWL stated that at present the base port to be used for construction was not known.

The Planning Inspectorate advised that the test for Requirements were the same as the planning conditions tests set out in Circular 11/95.

The Planning Inspectorate drew attention to the definition of 'maintain' provided in the dDCO, and drew the applicant's attention to a letter from the MMO relating to the examination of the Triton Knoll Offshore Wind Farm, setting out what the MMO considered could fall within the definition in the context of what has been assessed (available [here](#)).

The Planning Inspectorate queried the relationship between the proposed technology and the need for the project to be brought forward over two or three areas. SWL stated that flexibility is being sought for the location of offshore platforms but that the dDCO limits the maximum permitted number and type of platform for Project One overall. .

The Planning Inspectorate queried reference to works "outside Order limits" in paragraphs 17 and 24 of the dDCO. SWL confirmed that this related to limits of deviation which all fall within the Order limits. The Inspectorate reiterated that it would be helpful to see draft Land Plans with the next version of the dDCO.

Structure of Marine Licences

The Planning Inspectorate emphasised the importance of the consistency of definitions between the dDCO and dDML.

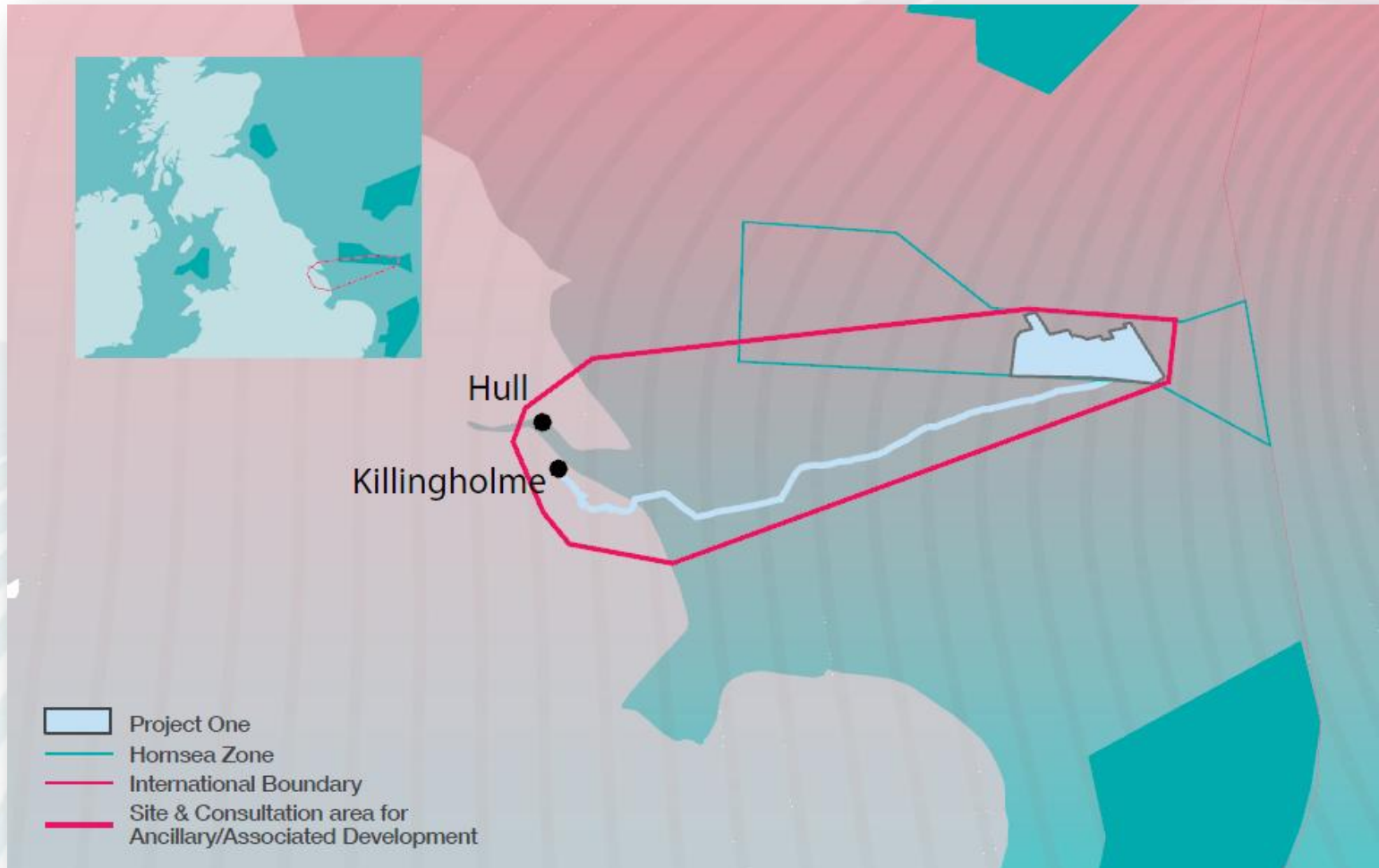
The Planning Inspectorate stated that in principle the implementation of multiple marine licences would be acceptable under the PA 2008 regime. It was queried whether SWL might provide a plan showing the cut-off between the two dDMLs, emphasising the importance of clarity in the context of enforcement. SWL stated that due to overlapping areas, this could be difficult to reflect in a plan but agreed to consider this point further.



Delivering a New Energy

3. Project One Update

Hornsea Zone – Project One



DONG
energy

SIEMENS

Agreement for Lease from The Crown Estate for Project One signed on 20th July 2011 and cable route AfL signed January 2012

8.0MW Turbine

8.0MW Turbine – Height to tip 200m

Siemens 3.6MW – Height to tip 150m

Siemens 3.6MW

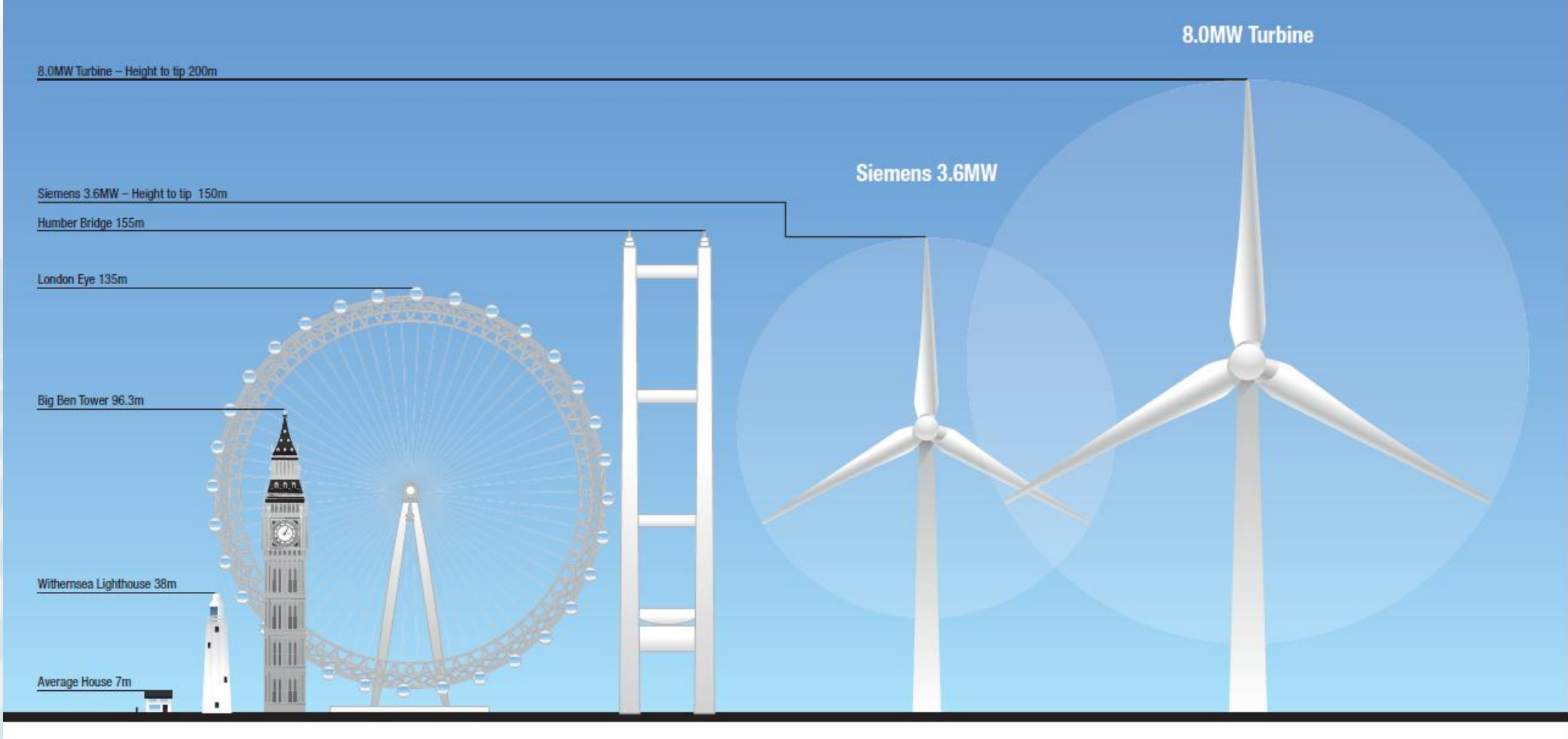
Humber Bridge 155m

London Eye 135m

Big Ben Tower 96.3m

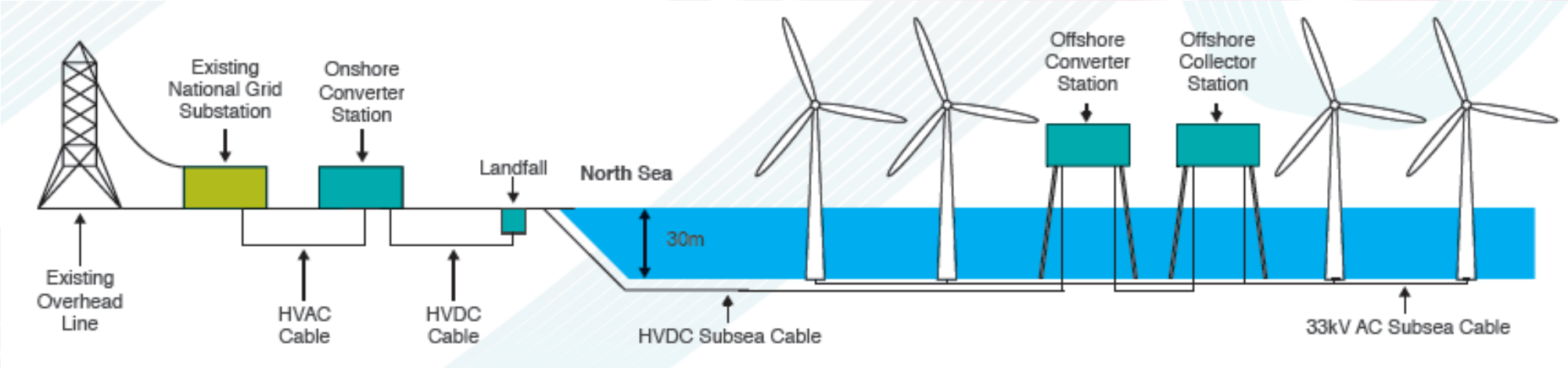
Withernsea Lighthouse 38m

Average House 7m

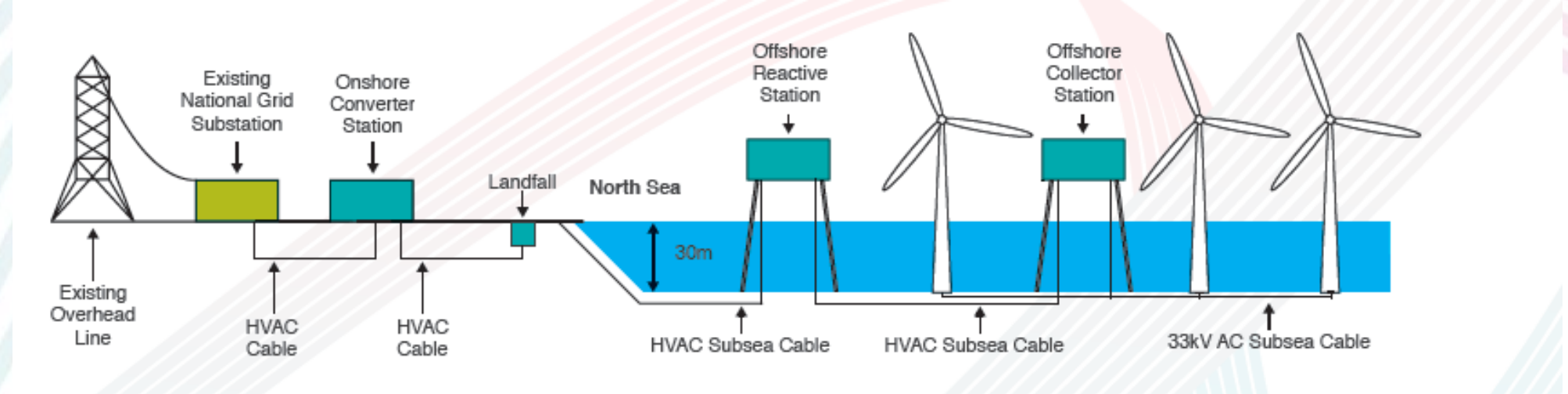


HVAC/HVDC Transmission Options

HVDC



HVAC



MetMast

- SMart Wind conducted a maintenance visit to the met mast, between 15/02/2013 and 19/02/2013. During this visit all of the navigation aids were inspected thoroughly and all faults were corrected. Before the maintenance technicians left the met mast, all navigation aids were tested and were confirmed fully operational.



Figure 14 – Completed met mast with helical jacket foundation (October 2011).

Hornsea Offshore Survey Activity 2012



Bird & Marine Mammal Surveys



- Southern Star Survey - Complete



- Aerial Surveys - Complete

Other Surveys



- No Geotechnical Surveys planned for 2013
- No further potting surveys planned for 2013

Key Stakeholder Meetings (since last PINS Meeting on 12/12/12)

Since last PINS Meeting, 12/12/12

Maritime & Coastguard Agency
P&O
C.GEN
Civil Aviation Authority
E.ON
East Lindsey DC
Fairfield Energy
Humberside Airport
Helicopter Operators workshop
Humberside Airport
National Grid
Parliamentary Reception
Perenco
RSPB
THLS/MCA
Centrica
Commercial Fisheries
Environment Agency
JNCC, NE, MMO, Cefas
MIEU
Dutch Environment Ministry

Near future

English Heritage
Navigation stakeholder workshop
MMO Marine Licence workshop
Natural England
N Lincs Council

Phase 1 Consultation Events

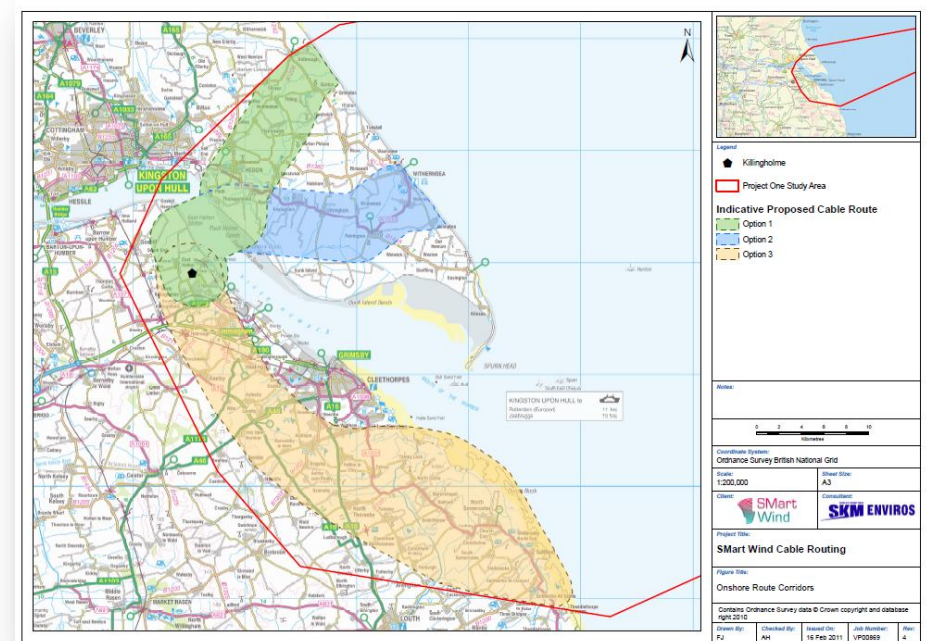
Approach to consultation presented in Statement of Community Consultation (SoCC)

Phase 1 Consultation Events

- 15th March to 15th April 2011
- Held at venues along 3 broad cable route corridors
- Over 200 attendees over 11 events
- Widespread Local TV and Newspaper Coverage
- 0800 tel number & Freepost return cards
- Children's activities

Questionnaires

- 65 completed and returned
- 92% support the Hornsea Project One
- 98% of respondents said they felt better informed as a result of attending the consultation event.



Phase 2 Consultation Events

Phase 2 Consultation Events

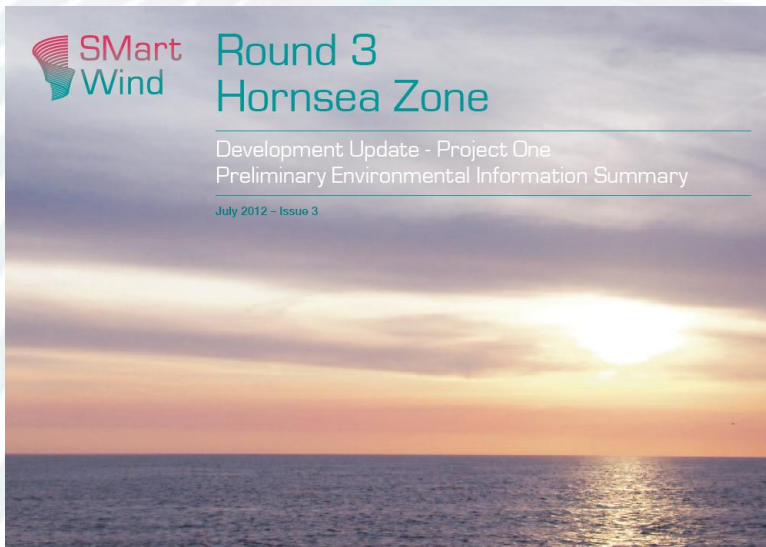
- Events were held at venues closest proximity to the preferred onshore cable route corridor and other associated onshore development.
- Over 250 attendees over 8 events in November
- 4th November to 16th December 2011
- 42 day consultation period
- Local residents, businesses, community groups and organisations with postcodes within 400m of the preferred cable route corridor, landing point and within 1.5km of the proposed converter station boundary
- Landowners likely to be affected by the preferred cable route corridor

Invitations and Publicity

- Section 42 Prescribed Consultees – 285 recipients
- 2,074 residents within 400m of the cable route and 1.5km of potential convertor station sites
- 117 Landowners, occupiers and land agents
- Over 5,000 non-statutory invited to comment
- 646 Website registrants invited to comment
- MPs, local government members and officers and local VIPs
- Over 200 questionnaires completed both online and hardcopies
- >50 written responses to S.42 - no comments received from consultees on project parameter iterations included in Phase 2



Phase 3 Consultation



- 42 day consultation period – 1st August to 12th September 2012
- 57 responses to date
- Release of Preliminary Environmental Information Report (PEIR)
- Release of Project Update Issue 3 (acting as Non-Technical Summary to PEIR)
- Incorporation of HVAC Transmission Technology and 2nd Scoping Opinion issued by IPC in 17th May 2012

- By correspondence only
- All information available on www.smartwind.co.uk
- Section 42 and 47 recipients received CDROM and hardcopy NTS
- Over 3,000 recipients including:
 - Statutory and Non-Statutory Consultees
 - Local residents, businesses and organisations with postcodes within 400m of the preferred cable route corridor and landing point and 1.5km from the boundaries of the four candidate converter station sites.
 - Members of British and European Parliaments with local constituencies wholly or partly within the consultation boundary.
 - District and county councillors with wards/divisions wholly or partly within the consultation boundary.
 - Website registrants & stakeholders who completed questionnaires

Phase 4 Consultation

Phase 4 Consultation

- Phase 4 Consultation was the final stage of consultation.
- Provided all stakeholders the opportunity to review and comment on all draft documents, reports and plans that will accompany the application to the Planning Inspectorate.
- 8,500 pages, 174 files, 2.1Gb
- 42 days consultation period ended 13th March 2013



Phase 4 Consultation Events

- Public consultation events held at the same locations as previously held Phase 2 consultation events
- 3,596 stakeholders issued Phase 4 information for comment
- Land notices along cable route

Date	Venue		
Tues 19 Feb	Grimsby Town Hall - Assembly Room Town Hall Square Grimsby DN31 1HX	Saturday 23 Feb	Main Concourse St Stephens Shopping Centre 110 Ferensway Hull HU2 8LN
Wednesday 20 Feb	East Halton Village Hall Townside East Halton DN40 3NS	Monday 25 Feb	Laceby Community Centre High Street Laceby DN37 7AA
Thursday 21 Feb	Holton le Clay Community Centre Picksley Crescent R/O Junior School Holton-le-Clay DN36 5DR	Tuesday 26 Feb	North Killingholme Village Hall Village Green North Killingholme DN40 3LX
Friday 22 Feb	North Cotes Village Hall Lock Road North Cotes DN36 5UP	Wednesday 27 Feb	Immingham Civic Centre Lyndsey Suite Pelham Road Immingham NE Lincs DN40 1QF

Phase 4 Consultation – 65 S.42 Responses and 32 S.47 Responses logged

County, District and Parish Councils

East Lindsey District Council
Hull City Council
Lincolnshire County Council
Lincolnshire County Council Archaeology
Melton Borough Council
Norfolk County Council
North East Lincolnshire Council
North Yorkshire County Council
Nottinghamshire County Council
Peterborough City Council
Scarborough Borough Council
West Lindsey District Council
Woodmansey Parish Council

International

Belgian Authorities (Fishing & Navigation)
Dutch Environment Ministry

Statutory Advisors

English Heritage
Environment Agency
Health Protection Agency
Highways Agency
HSE
JNCC / NE
MCA
MMO
Natural England
Trinity House

Centrica Energy
Centrica Plc
Chamber of Shipping
E.ON
E.ON Humber Gateway
GDF SUEZ E&P UK Ltd
GPSS
Humberside Fire and Rescue
Lincolnshire Wildlife Trust and Yorkshire Wildlife Trust
National Grid
National Grid Humber Pipeline
Network Rail
North Coates Airfield
RSPB
RYA
The Coal Authority
Total

S.47

Various residents and landowners – local jobs, traffic management, noise, land drains, HDD, archaeology interest, etc.

S.48 Notice issued to local newspapers and National Papers (Lloyds List, Fairplay, Independent, London Gazetteer)

Legal Notices

SECTION 48, PLANNING ACT 2008
REGULATION 4, THE INFRASTRUCTURE PLANNING APPLICATIONS (PRESCRIBED FORMS AND PROCEDURES) REGULATIONS 2009
NOTICE PUBLISHING A PROPOSED APPLICATION FOR A DEVELOPMENT CONSENT ORDER (DCO) TO CONSTRUCT AND OPERATE OFFSHORE WIND FARMS
(PROJECT ONE) AT HORNSEA OFFSHORE WIND FARM ZONE

1. Notice is hereby given that certain wind turbine, access limited, cables or other cables, 1400 London way, London, EC2Y 2EJ, and a fibre optic cable, currently known as the "main limited", which is able to be incorporated into and will have the same access provisions as that respective rights, interests and corresponding interests in the Applicant's plans to apply to the Secretary of State for a development consent order (DCO) for the construction and operation of up to three offshore wind farms, with a combined generating capacity of up to 1.2 gigawatts, and associated development to connect the wind farms to the national grid ("project one").

2. Each of the offshore wind farms will include turbine and will be relatively significant infrastructure projects in their own right, though they will be authorised by a single DCO. The DCO will include various powers enabling the Director or the Secretary of State to take such actions as he or she may consider necessary for the purposes of carrying out the project one and associated development, in the name or on behalf of certain limited or access limited. The documents referred to at paragraph 7 below contain the full details of the application for the project one and associated development, in the name or on behalf of certain limited or access limited.

3. The application for development consent for project one has been completed and submitted to the Secretary of State for the Environment, Heritage and Heritage.

4. The documents which will be available at the public consultations are set out in section 1 to section 7 below in the outline of the Hornsea zone and the a table area of the zone. The western boundary of section 1 lies 100 km from the coast of the east coast of England and the eastern boundary lies 100 km from the coast of the west coast of England.

5. The proposed DCO will, among other things, include and authorise:

a.1 the construction and operation of up to two offshore wind farms, depending on the technical capacity of each turbine, with a tip height up to 200 metres above mean high water springs, and their foundations;

a.2 the construction of up to two offshore transfer substations, up to 100 metres above mean high water, and their foundations;

a.3 the construction of a network of access limited circuits connecting the wind farms, offshore transfer substations, offshore collector substations, offshore converter substations and offshore accommodation substations;

a.4 the construction of a marine connection to the shore, the route of transmission or which may be high voltage alternating current or high voltage direct current, forming a north-south direction from the southern boundary of section 1 to the proposed access limited; including cables and optical cabling where, consisting of up to four access limited circuits which may connect with the onshore marine connection substations;

a.5 the construction of a marine connection consisting of all sections of the access limited circuits connecting the marine connection to the shore, including water laying sea bed and limiting of the access limited transfer joint cable;

a.6 the construction of up to four underground access limited circuits connecting the access limited to the shore or offshore ports in the county of Lincolnshire, forming the connection between the onshore and the access limited circuits;

a.7 the construction of up to four underground transmission limited circuits, forming a north-south direction or approximately so on, connecting the underground access limited transfer joint cable in the vicinity of the access limited transmission substations;

a.8 the construction of an access limited transmission substation in the vicinity of north Lincolnshire;

a.9 the construction of a connection consisting of up to two underground access limited circuits between the access limited transmission substation and the north-south direction limited cable substation, including a connection within the offshore cable substation;

a.10 improvements to the verges, signages and private access roads forming from cross-roads roads between the junction with other roads in the east and south-east in the west;

a.11 the creation of temporary access roads, footpaths or other means of access to the project one; the construction and/or maintenance of the infrastructure; a.12 a protection scheme for the construction of the onshore structures;

a.13 a construction protection scheme for the project one; a.14 the placement of concrete structures and other structures;

a.15 the disposal of excess material generated during the installation of the onshore structures;

a.16 works to alter the position of structures, including masts, towers, cranes and cables;

a.17 works to alter the position of, or otherwise interfere with, non-aviation masts, towers or telecommunications;

a.18 the installation of other works to mitigate any adverse effects of the construction, implementation or operation of the authorised project;

a.19 works for the benefit or protection of any structures;

a.20 works to be carried out in connection with the construction of the authorised project;

a.21 works to access means of access;

a.22 works to be carried out before the project one;

a.23 the construction of jointing pits connecting the zones using the underground transmission limited circuits connecting the underground access limited transfer joint cable to the access limited transmission substation;

a.24 in relation to the connection between the access limited transmission substation and the north-south direction limited cable substation, the construction of private roads are necessary for parking;

a.25 the construction of a temporary access road, with signposting and used for the purpose of constructing the underground transmission limited circuits connecting the underground access limited transfer joint cable to the access limited transmission substation;

a.26 such other works and apparatus, plant and machinery or other values as may be necessary or expedient for the purpose of or in connection with the construction of the authorised project;

a.27 the temporary stopping, alteration or diversion of any vehicle;

a.28 the permanent access limited components, installation of any access limited rights or project one;

a.29 the application and/or implementation or operation of the project one including the site provisions or the wider resources; the Land Charge Act 1928 and legislation relating to compulsory purchase; the proposed application to the Secretary of State for the purposes of the Infrastructure Planning (Environmental Impact Assessment) Regulations 2009; the means that the proposed access limited constitute development for which an environmental impact assessment is required and the proposed application for a DCO will therefore be accompanied by an environmental statement (if applicable), documents, plans and maps showing the nature, location and scale of project one and including a civil environmental statement forming part of the preliminary environmental statement on project one; the documents containing the information a consultation from 2012 January 2013 until 15th March 2013 on the project one and all other relevant documents.

Venue	Opening hours	Venue	Opening hours
Millers Library Green Street, Millers. United Kingdom, HU12 8JH	Closed Sun & Mon Tue & Fri: 10am - 5pm Wed: 10am - 5pm Thu: 10am - 5pm Sat: 10am - 12.30pm	Clonwy Library Town Hall Square, Clonwy. United Kingdom, HU12 8JG	Mon to Thurs: 10am - 12.30pm Fri: 10am - 12.30pm Sat: 10am - 4pm Sun: closed
Clonwy Library 17 St Andrews Gate, Clonwy, United Kingdom, HU12 8JG	Closed Sun & Mon Tue & Fri: 10am - 5pm Wed & Thurs: 10am - 5pm Sat: 10am - 12.30pm	Clonwy Library The Parish Room, Market Lane, Clonwy, Barrow upon Humber, HU12 8JG	Closed Sat, Sun, Tue & Thurs Mon & Fri: 10.30am - 1.30pm Wed: 2pm - 5pm
East Riding Mobile Library	Various locations across the region - visit www.eastriding.gov.uk for details	East Lindsey Access Point - South Town Hall Carson Street, South Louth, Lincolnshire, HU17 8JH	Closed Sat & Sun Mon, Tues, Thurs & Fri: 10am - 5pm Wed: 10am - 5pm
Inveringham Library Clay Centre, Inveringham, United Kingdom, HU12 1DF	Closed Sun Mon to Fri: 10am - 5.30pm Sat: 10am - 5pm	East Lindsey Access Point - Market Square Library Market Square, Louth, Lincolnshire, HU17 8JH	Closed Sun Mon, Tues & Fri: 10am - 5pm Wed: 10am - 5pm Thurs: 10am - 5pm Sat: 10.30am - 4pm
Leasing Library Market Centre, Leasing, United Kingdom, HU17 7JG	Closed Sun & Mon Tue, Wed, Thurs: 10am - 5.30pm Fri: 10.30am - 12pm	Hull Central Library Reference and Information Library, Hull, United Kingdom, HU1 2JY	Closed Sun Mon - Thurs 10.30am - 6.30pm Fri - 10.30am - 6.30pm Sat 10.30am - 4.30pm
Wellham Library High Street, Wellham, United Kingdom, HU17 7JG	Closed Sun Mon, Wed & Fri: 10am - 5pm, Tue & Thurs: 10am - 5pm, Open: 10.30am, Sat: 10am - 5pm		

6. The aforementioned documents will also be available at public exhibitions to be held as follows:

Date	Venue	Time
Tuesday 18th February 2013	Ormsby Town Hall - Assembly Room	2pm - 8pm
Wednesday 20th February 2013	East Haddon Village Hall	2pm - 8pm
Thursday 21st February 2013	Holton in Clay Community Centre	2pm - 8pm
Friday 22nd February 2013	North Colton Village Hall	2pm - 8pm
Saturday 23rd February 2013	St. Andrew's Village Centre, Hull	2pm - 8pm
Monday 25th February 2013	Louth Community Centre	2pm - 8pm
Tuesday 26th February 2013	North Kilingholme Village Hall	2pm - 8pm
Wednesday 27th February 2013	Inveringham Civic Hall	2pm - 8pm

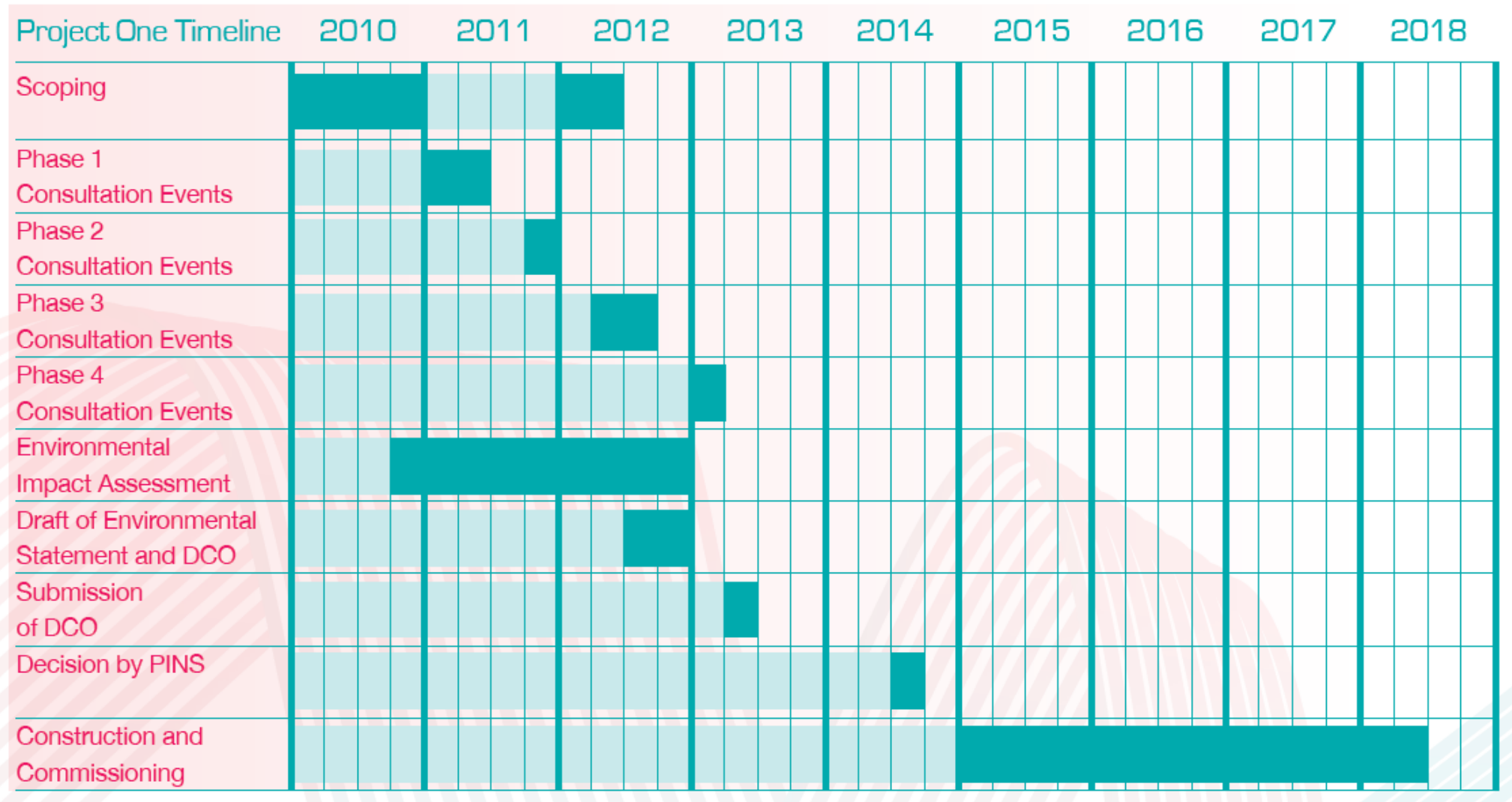
9. Where a copy of the documents is requested from the Applicant, this can be provided free of charge or cost. The documents can be made available in hard copy format on request at a cost of project specific production summary or project information, the cost of charge is £5.00. All other application documents including draft DCO - DCO, DCO, DCO for all documents, in hard copy format on request at a cost of project specific production summary or project information, the cost of charge is £5.00. Further details in relation to project one and the aforementioned documents can be found on smart wind's website (www.smartwind.co.uk) or requested from the email or postal addresses below or by phone or text on 01474 647474. Any response to, or other representations in respect of, project one should be sent to the Applicant, case or smart wind's website, or email to smartwind@smartwind.co.uk or by post to smart wind, 11th floor, 140 London Way, EC2Y 2EJ.

10. Any requests or representations in respect of the proposed DCO should be received by the Applicant or smart wind on or before 20th March 2013. All such requests in writing, although the grounds of the response or representation, (if) include which making the response or representation, and (if) give an address to which correspondence relating to the response or representation may be sent.

11. Responses and other representations may be made public.



Project One Programme



Option A : One Phase Programme

	Component	Year 1	Year 2	Year 3	Year 4
Onshore	Export Cable	[Green bar]			
	Substation		[Green bar]		
Intertidal	Export Cable	[Yellow bar]	[Yellow bar]		
Offshore	Export Cable		[Blue bar]		
	WTG Foundations		[Blue bar]		
	Substations		[Blue bar]	[Blue bar]	[Blue bar]
	Inter-Array Cables		[Blue bar]		
	WTG			[Blue bar]	[Blue bar]
	Commissioning			[Blue bar]	[Blue bar]

Option B: Phased Programme

	Component	Year 1	Year 2	Year 3	Year 4	Year 5
Onshore	Export Cable	█			█	█
	Substation	█	█	█	█	█
Intertidal	Export Cable	█	█	█	█	█
Offshore	Export Cable		█	█	█	
	WTG Foundations		█	█	█	█
	Substations		█	█		█
	Inter-Array Cables		█	█	█	█
	WTG		█	█	█	█
	Commissioning		█	█	█	█



Delivering a New Energy

4. Introduction to Project Two

Project Two

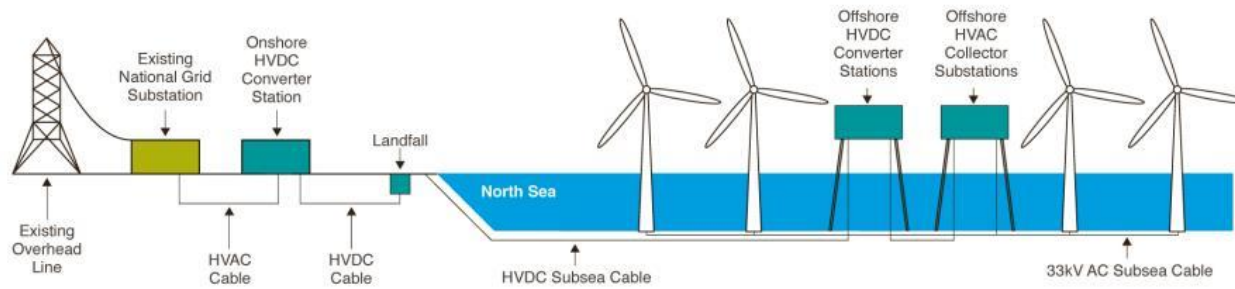
- Adjacent to Project One
- Offshore site area of Approximately 407 km² and Cable route to shore
- Potential generating capacity of up to 1,800 MW
- Grid connection point at existing Killingholme Substation (same as Project One)



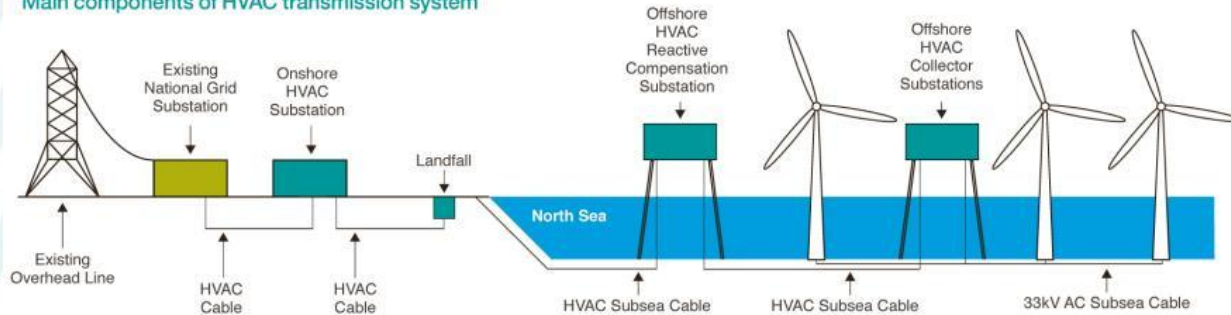
Project Parameters

Element	Minimum	Maximum	Comments
Number of Wind Turbines	80	360	
Wind Turbine capacity(MW)	5	15	
Project capacity (MW)	-	1,800	
Upper blade tip height (m)	-	276	Relative to LAT
Lower blade tip height (m)	26	-	Relative to LAT
Rotor diameter (m)	-	250	

Main components of HVDC transmission system



Main components of HVAC transmission system



Phase 1 Consultation

Phase 1 Consultation

- Phase 1 Consultation is the first stage of consultation.
- Will provide all stakeholders the opportunity to review and comment on all environmental information.
- 42 days consultation period

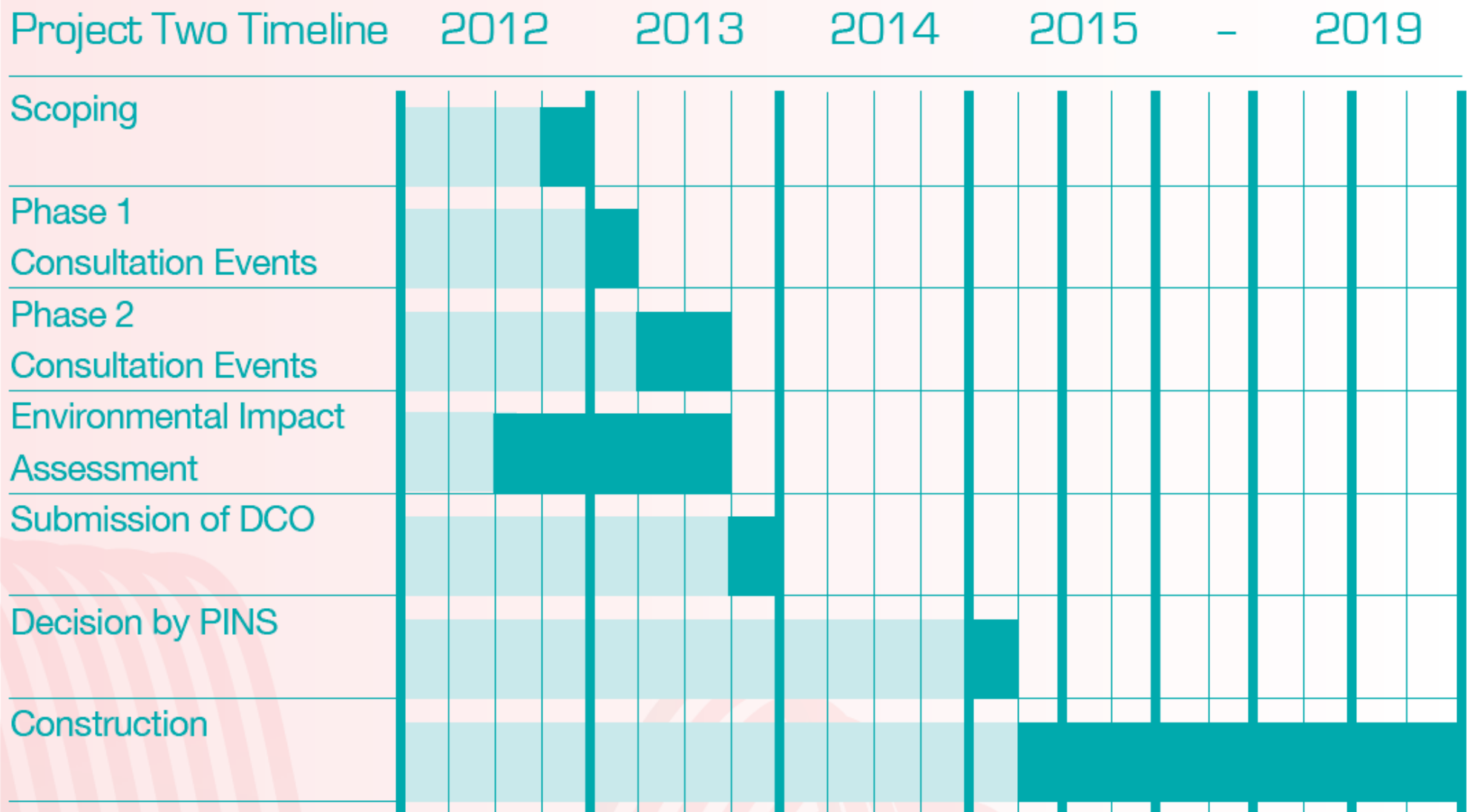
Phase 4 Consultation Events

- Public consultation events held at the same locations & dates as Project One Phase 4 consultation events.
- Smaller number of responses to P2



Date	Venue	Date	Venue
Tues 19 Feb	Grimsby Town Hall - Assembly Room Town Hall Square Grimsby DN31 1HX	Saturday 23 Feb	Main Concourse St Stephens Shopping Centre 110 Ferensway Hull HU2 8LN
Wednesday 20 Feb	East Halton Village Hall Townside East Halton DN40 3NS	Monday 25 Feb	Laceby Community Centre High Street Laceby DN37 7AA
Thursday 21 Feb	Holton le Clay Community Centre Picksley Crescent R/O Junior School Holton-le-Clay DN36 5DR	Tuesday 26 Feb	North Killingholme Village Hall Village Green North Killingholme DN40 3LX
Friday 22 Feb	North Cotes Village Hall Lock Road North Cotes DN36 5UP	Wednesday 27 Feb	Immingham Civic Centre Lyndsey Suite Pelham Road Immingham NE Lincs DN40 1QF

Project Two – Programme



Pre Application Consultation

- Scoping report submitted to PINS October 2012
- PINS Scoping Opinion November 2012
 - Identification of Impacts
 - Lessons learnt Project One
- Statement of Community Consultation
 - Notification of SoCC availability published December 2012
- Section 46 Notification issued 29th January 2013
- Phase 1 Consultation Events - 31st January to 13th March 2013
 - Phase 1 Consultation Document
- Q3 2013 Phase 2 Consultation Events
 - Draft Environmental Statement

SMart Wind Limited

Hornsea Offshore Wind Farm (Zone 4) – Project Two



Statement of Community Consultation (SoCC) made available for inspection and notice published in accordance with Section 47(B) of the Planning Act 2008.

SMart Wind will be making an application for development consent to the Planning Inspectorate for the Hornsea Project Two Offshore Windfarm which is located 89km off the East Riding of Yorkshire coast and connects to the national electricity grid in North Killingholme, North East Lincolnshire.

Pursuant to Section 47 of the Planning Act 2008, SMart Wind Limited is publishing its SoCC, which sets out how it intends to consult those who live in the vicinity of the proposed works through direct mailouts, consultation events and local media as well as how feedback can be submitted.

The SoCC is available to view at www.smartwind.co.uk or in person at the location and times listed below.

The deadline for receipt of response to SMart Wind is [date to be confirmed]. If you have any comments regarding Project Two, or if you have any questions about the consultation methods outlined within the SoCC, please contact us via one of the options below. Comments received by SMart Wind may be recorded for the purposes of preparing the Consultation Report and may be made public. By registering on the SMart Wind website, you may request to receive project updates by email or by post.

Website: www.smartwind.co.uk Email: info@smartwind.co.uk
 Freephone: 0800 285 1295 Telephone: 020 7776 5500

Post: 11th Floor, 140 London Wall, EC2Y 5DN

Fisheries Liaison Officer:
 Nick Garside Mob: 07538827013 Tel: 01904 635 432.
 Email: nick.garside@lwe.co.uk

Venue	Opening hours
East Riding Mobile Library	Various locations across the region – check www.eastriding.gov.uk for details
Immingham Library Civic Centre, Pelham Road, Immingham, DN40 1GF	Closed Sun Mon to Fri: 9am – 5.30pm Sat: 10am – 2pm
Laceby Library Stanford Centre, Cooper Lane, Laceby, DN37 7AX	Closed Sun & Mon Tues to Fri: 2pm – 5.30pm Sat: 9.30am – 12pm
Waltham Library High Street, Waltham, DN37 0LL	Closed Sun Mon, Wed & Fri: 9am – 1pm, 2pm – 5.30pm Tues & Thurs: 10am – 1pm, 2pm – 5.30pm Sat: 9am – 2pm
Grimsby Library Town Hall Square, Grimsby, DN31 1HG	Mon to Thurs: 9am – 6.30pm Fri: 9am – 5.30pm Sat: 9am – 4pm Closed Sun
Goxhill Library The Parish Room, Howe Lane, Goxhill, Barrow upon Humber, DN19 7HS	Closed Sat, Sun, Tues & Thurs Mon & Fri: 3.30pm – 7pm Wed: 2pm – 5pm
East Lindsey Access Point – Louth Town Hall Cannon Street, Louth, Lincolnshire, LN11 9NW	Closed Sat & Sun Mon, Tues, Thurs & Fri: 9am – 5pm Wed: 9am – 4pm
East Lindsey Access Point – Mablethorpe Library Stanley Avenue, Mablethorpe, Lincolnshire, LN12 1DP	Closed Sun Mon, Tues & Fri: 9am – 5pm Wed: 9am – 4pm Thurs: 9am – 7pm Sat: 9am – 3pm
Hull Central library Albion Street, Hull HU1 3TF	Mon: Fri 7.30am – 5pm





Delivering a New Energy

5. PINS Review

Comments from PINS

5. PINS Review

a.draft DCO

b.draft Explanatory Memorandum

c.draft plans

d.draft Consultation Report

e.draft HRA documents

f.draft Marine Licence



Delivering a New Energy

6. Other Key Documents

Comments from PINS

6. Other key documentation

a. Funding Statement

b. Statement of Reasons

c. Book of Reference (see next slide)



Delivering a New Energy

7. CIA, HRA, Transboundary Consultation

CIA Strategy

Received comments from:

- PINS
- Natural England
- MMO
- The Crown Estate
- The Environment Agency
- MCA and Trinity House
- Dutch Ministry of Infrastructure and Environment
- Eastern IFCA

CIA Strategy – Presentation of Results

Three-tiered approach as follows:

1. Project One with built and operational projects, and projects under construction (data confidence = high);
2. The above plus other projects/plans consented but not yet implemented or submitted applications not yet determined. This includes Dogger Bank (Creyke Beck A & B) and East Anglia (One) which will be submitted by the time Project One is submitted (data confidence = medium);
3. The above plus projects on the National Infrastructure's Programme of Projects or in Development Plans or Policy. This includes Hornsea Project Two, Dogger Bank (Teesside A & B, and C & D) and East Anglia (Three and Four). For Dogger Bank (Teesside) and East Anglia (Three and Four) only scoping reports are available (data confidence = low). For Hornsea Project Two access to internal information (data confidence = medium).

EIA and HRA - Cumulative Assessment

PINS Comment on Applicants should be aware of the nuance between the Habitat Regulations Assessment (HRA) process and the Environmental Impact Assessment (EIA) process. In particular applicants should aim to avoid confusion in terminology between the assessment of 'cumulative' effects (an EIA requirement) and 'in-combination' assessment (an HRA requirement).

HRA process needs to consider the integrity of the Natura 2000 sites as designated, and this may have implications for the baseline which is used for the purposes of assessment. In the case of EIA a baseline is usually established by measuring conditions as they are today or a more appropriate future baseline.

However, the HRA in-combination assessment may need to take into account effects from all development including those already built and operational, as these may have affected the Natura site(s) (both positively and negatively) since its designation.

Transboundary Consultation

Consultation carried out as part of the Project One EIA:

- Shipping and Navigation
 - SNSOWF cumulative study presented to Dutch, Belgium and German authorities (2011)
 - Consultation with international shipping and ferry operators (e.g., DFDS and P&O; 2011 - ongoing)
- Commercial Fisheries
 - Ongoing consultation with key international fleets (Dutch, Danish, Belgian, French, German 2010 – 2013)

Transboundary consultation with other EU member states:

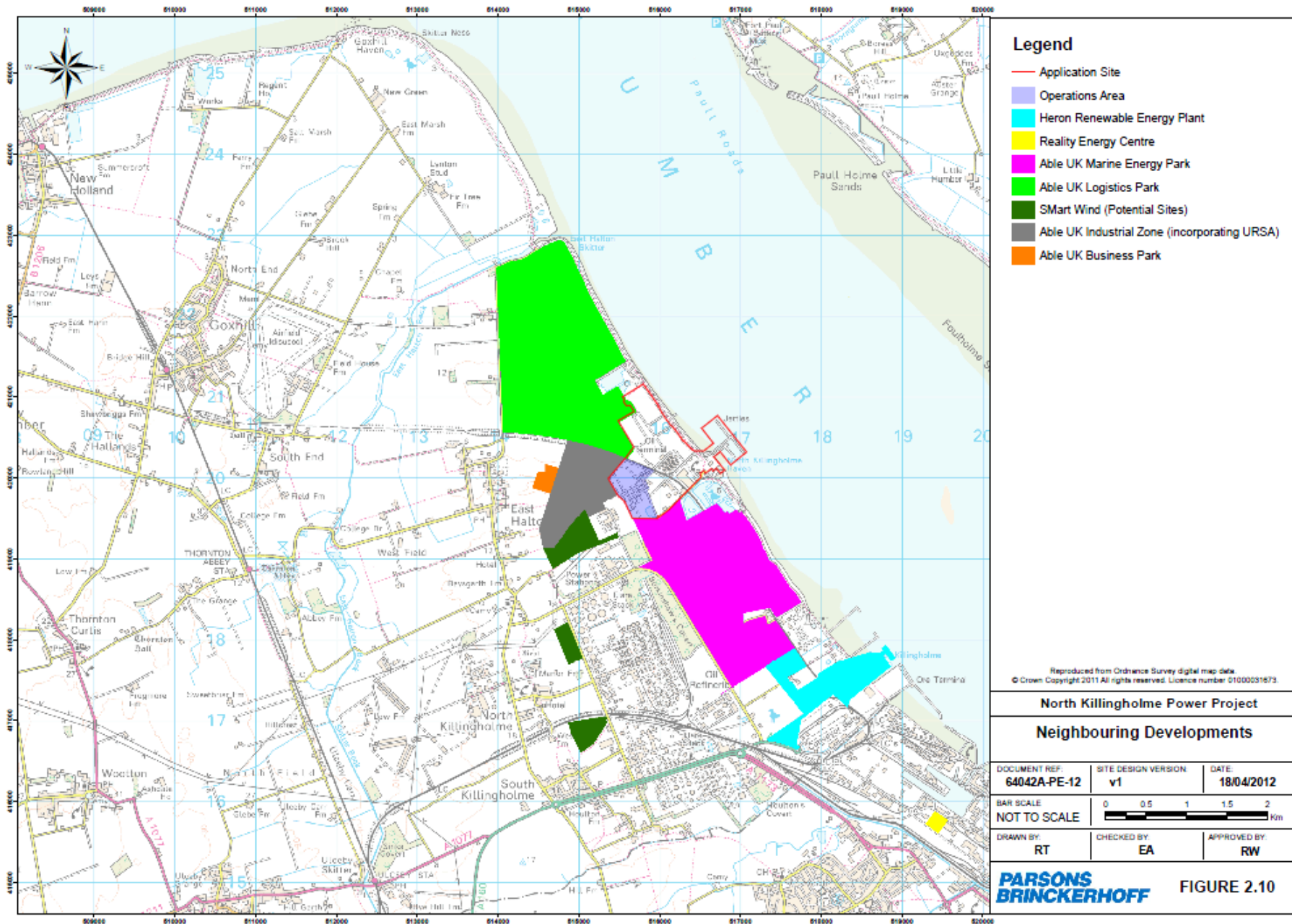
- Issued transboundary consultation note to Dutch, German, Belgian, French and Danish environmental ministries
- Meetings held with German (December 2012) and Dutch (March 2013) ministries
- Belgian, French and Danish environmental ministries declined request for meetings



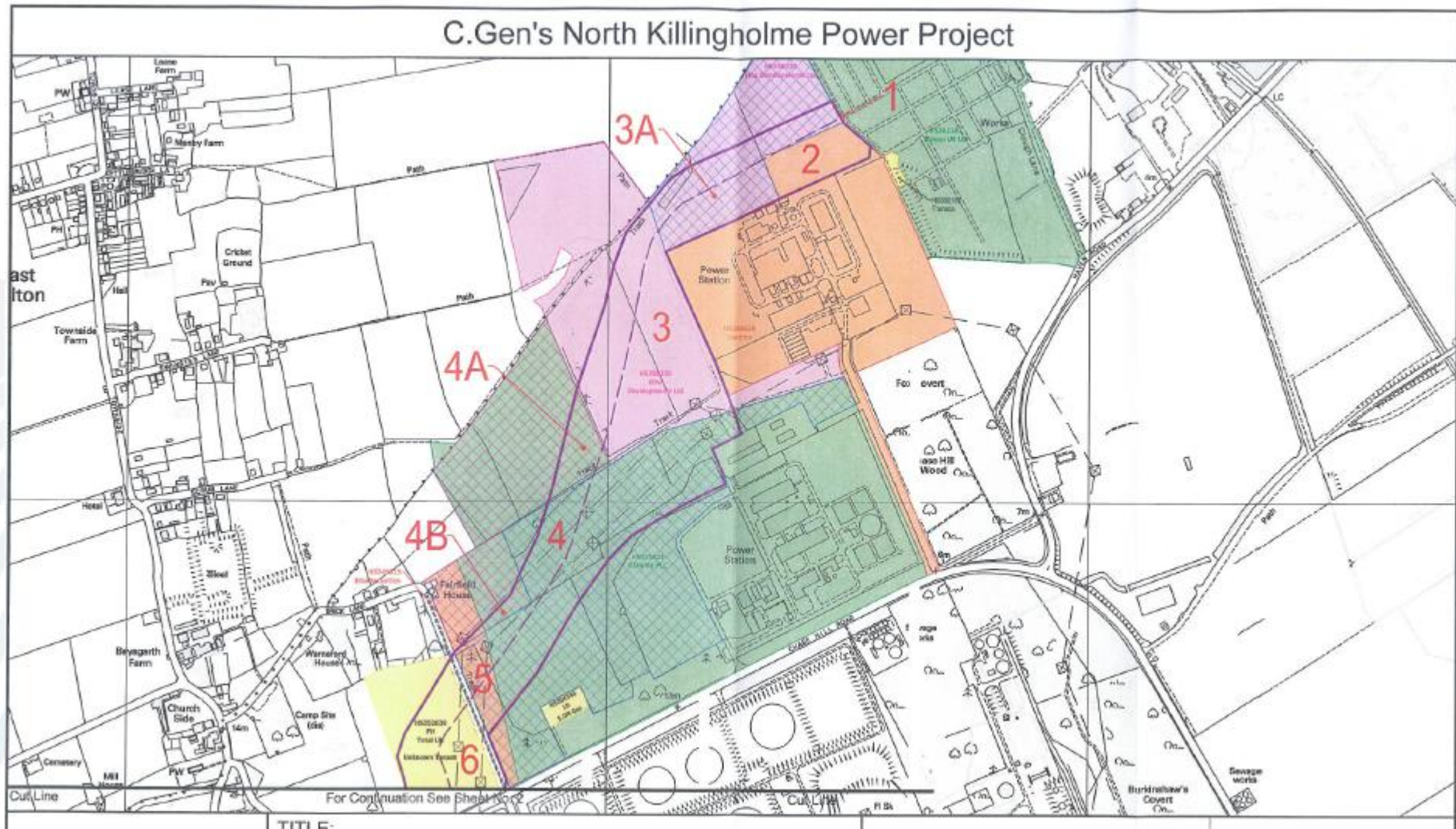
Delivering a New Energy

8. Interface with other PINS Projects.

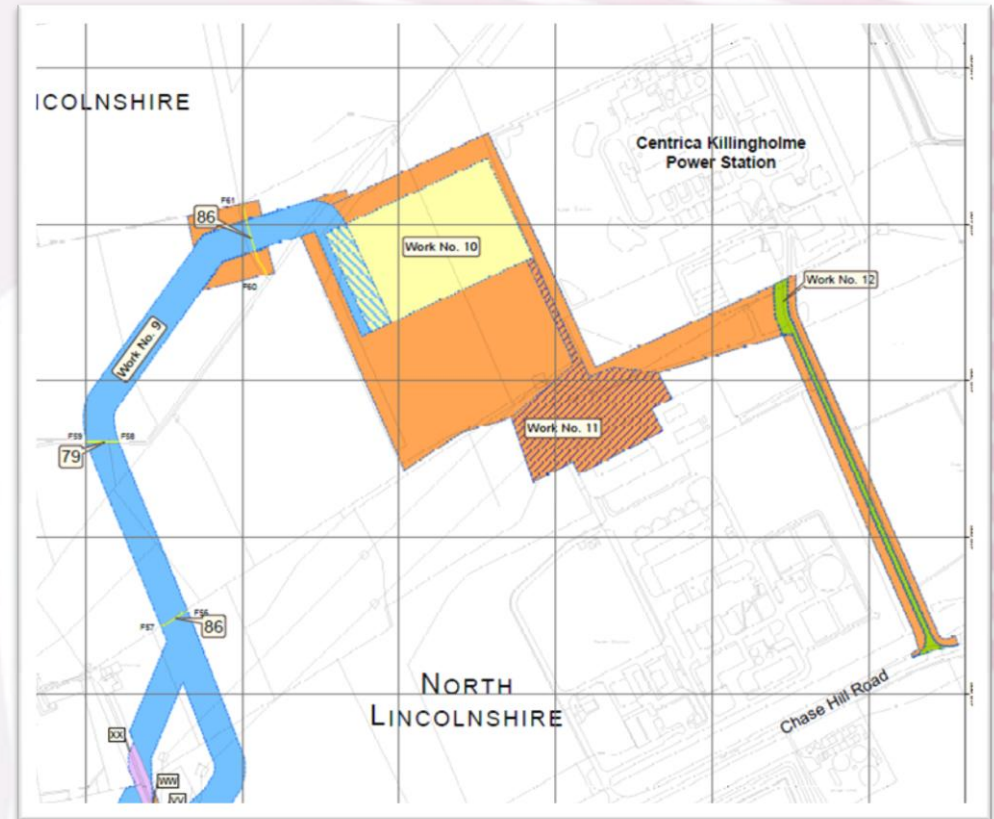
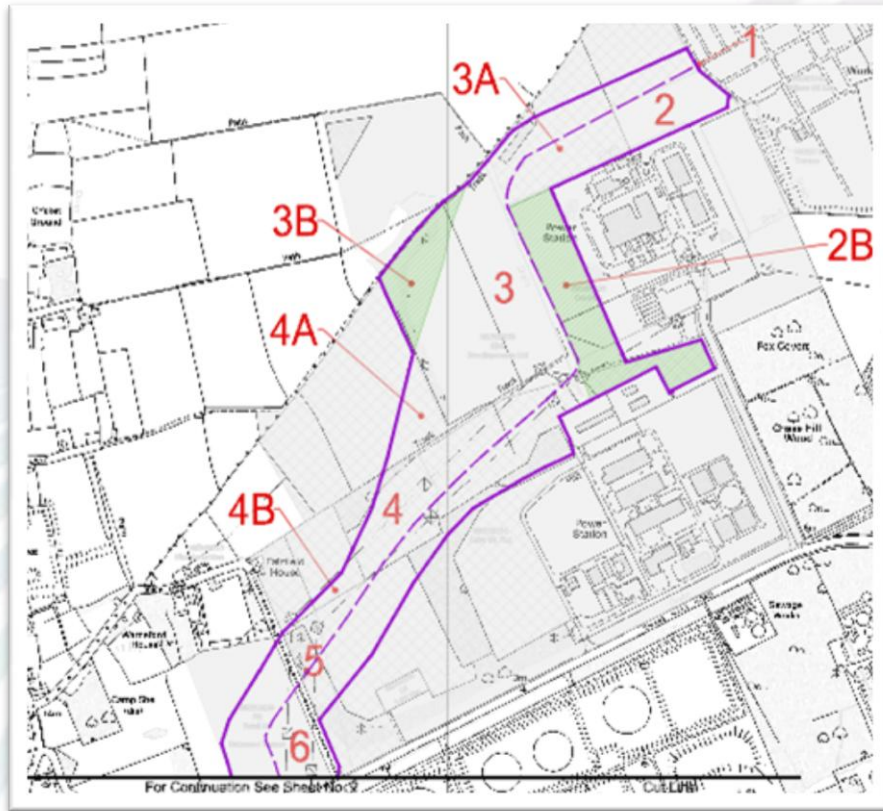
C.GEN (PEIR, May 2012 – not issued to SMW)



C.GEN (10th December 2012)



C.GEN (19th February 2012)



SMart Wind
 Delivering a New Energy

North Lincolnshire Power Project (The Project)

The Project is a 100MW onshore wind farm located in North Lincolnshire, North East England. The Project is a 100MW onshore wind farm located in North Lincolnshire, North East England. The Project is a 100MW onshore wind farm located in North Lincolnshire, North East England.

Key Information

Project Description

The Project is a 100MW onshore wind farm located in North Lincolnshire, North East England. The Project is a 100MW onshore wind farm located in North Lincolnshire, North East England. The Project is a 100MW onshore wind farm located in North Lincolnshire, North East England.

Key Information

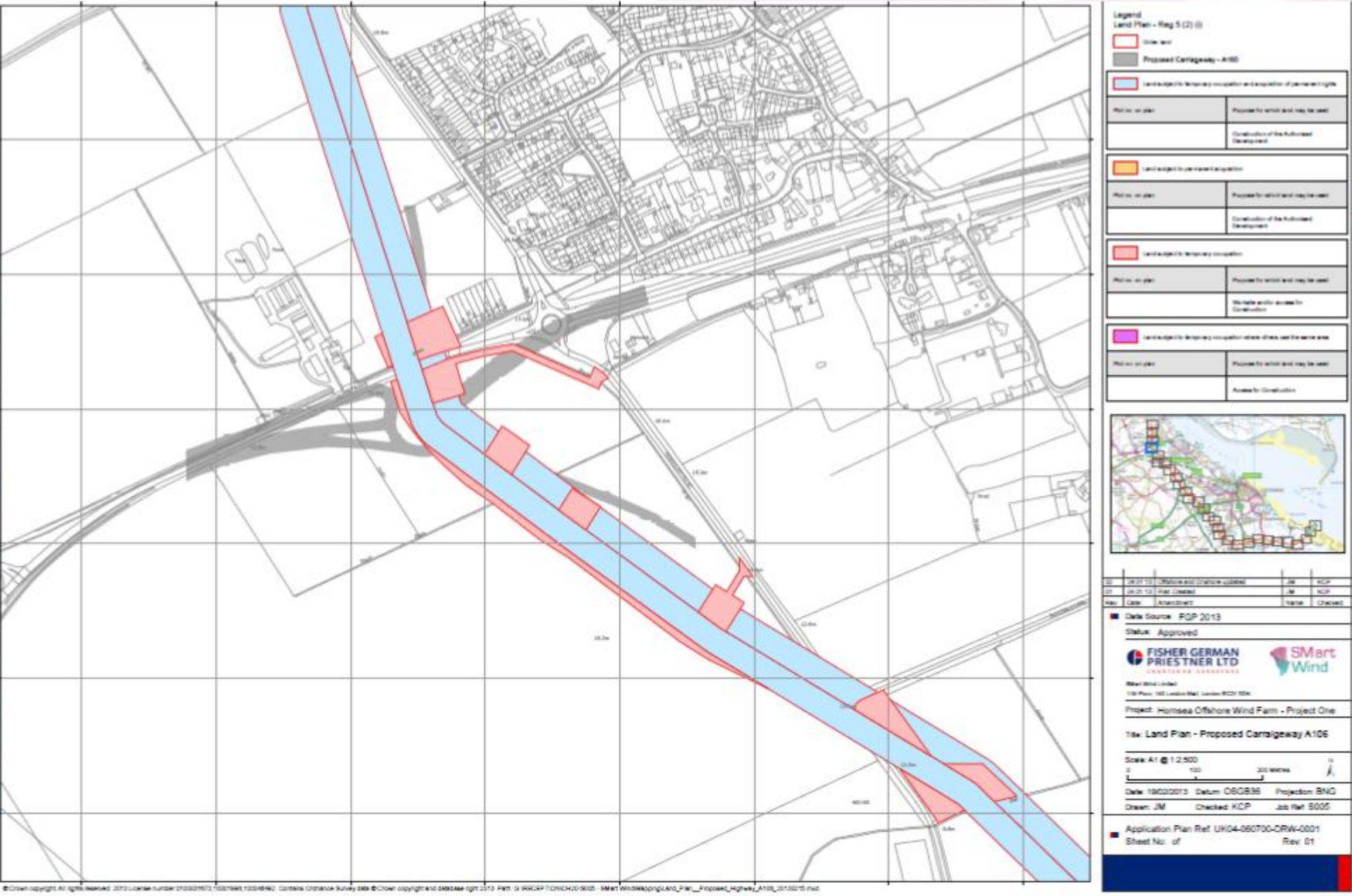
Project Description

The Project is a 100MW onshore wind farm located in North Lincolnshire, North East England. The Project is a 100MW onshore wind farm located in North Lincolnshire, North East England. The Project is a 100MW onshore wind farm located in North Lincolnshire, North East England.



Highways Agency

A160 Upgrade Project One and Two



© Crown copyright. All rights reserved. 2013. Licence number 2100019073, 10079661, 10079662. Contains Ordnance Survey data © Crown copyright and database right 2013. Part of OS Open Licence. Smart Wind is a registered trademark of Fisher German Priestner Ltd.

Able Marine Energy Park



Green Port, Hull

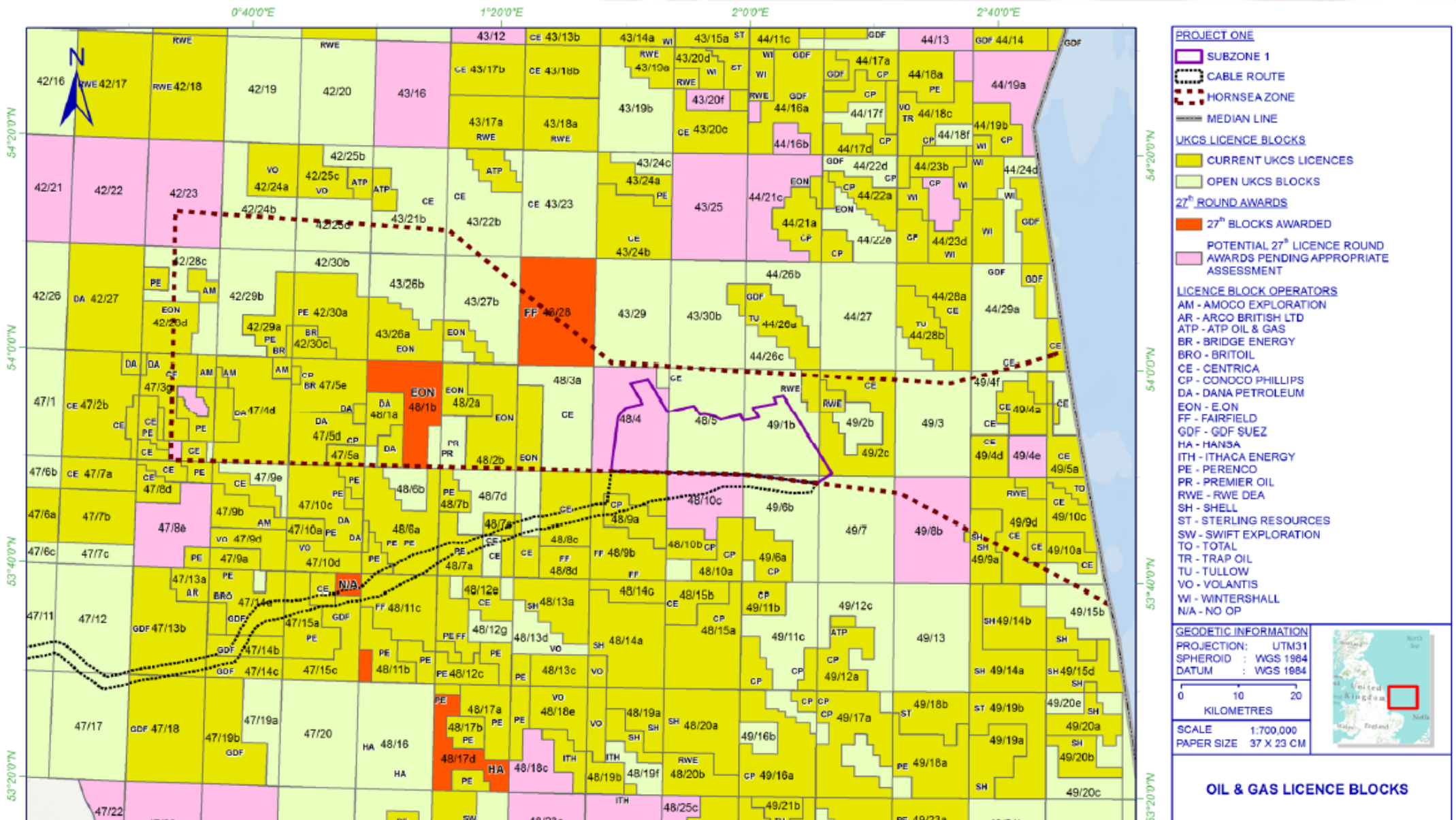




Delivering a New Energy

9. DECC 27th Round Appropriate Assessment

27th Round



As you know, the UK's Department of Energy and Climate Change has the responsibility for administering the offshore oil and gas licensing regime and our latest licensing Round the 27th closed on 1st May 2012. In accordance with the Offshore Petroleum Activities (Conservation of Habitats) Regulations 2001 (as amended) (OPAR 2001), a screening assessment was undertaken to determine whether the award of any of the Blocks applied for would be likely to have a significant effect on a relevant European conservation site, either individually or in combination with other plans or projects. The draft screening assessment concluded that 61 blocks or part blocks should be further assessed before licensing decisions are taken and we have now completed draft Appropriate Assessments for the 61 blocks, which are contained in 7 separate documents. In particular, I would draw your attention to the Southern North Sea draft Appropriate Assessment.

All of the draft Appropriate Assessments will be subject to a 5-week public consultation period starting from today and are available using the following link:- http://www.offshore-sea.org.uk/site/scripts/news_article.php?newsID=50

Please forward any comments you may have on the assessment(s) by **19th April** so DECC can take account of them in arriving at its decisions on blocks outstanding from the 27th licensing round. Comments may be sent to SEA.AA@decc.gsi.gov.uk



Offshore Oil & Gas Licensing

27th Seaward Round

Southern North Sea

Blocks 42/5, 43/16, 42/21, 42/22, 42/23, 43/10, 43/12, 43/20f, 43/25, 44/21c, 44/13, 44/16b, 44/16c, 44/18e, 44/19a, 44/23g, 47/3, 47/3k, 47/8e, 47/22, 47/23, 47/24, 48/4b, 48/10c, 48/18c, 48/23c, 48/24, 48/25c, 49/4b, 49/8b, 49/21d, 53/3a, 53/8

Habitats Regulations Assessment

Appropriate Assessment

March 2013



Figure 3.2: SACs relevant to this Appropriate Assessment

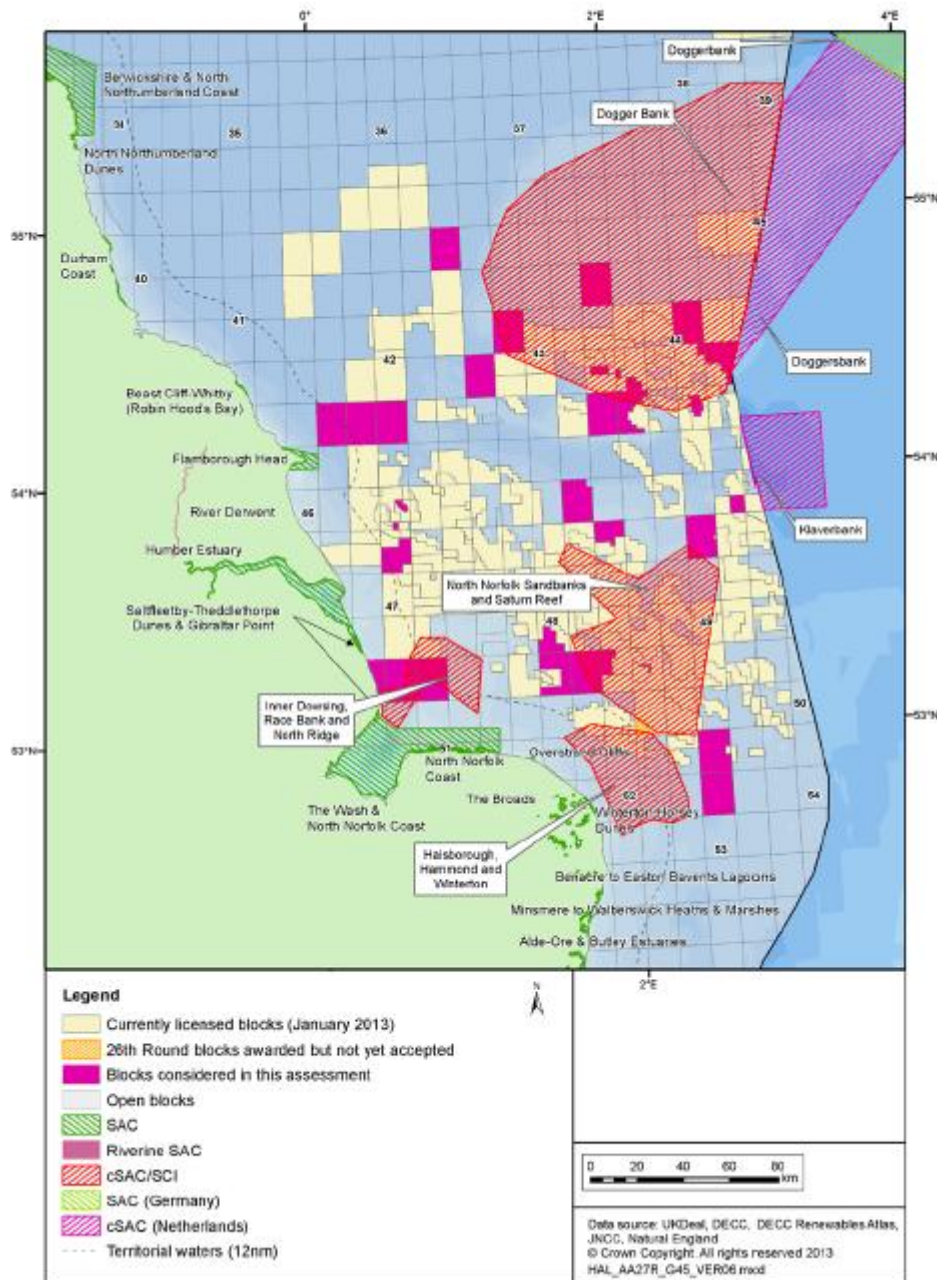
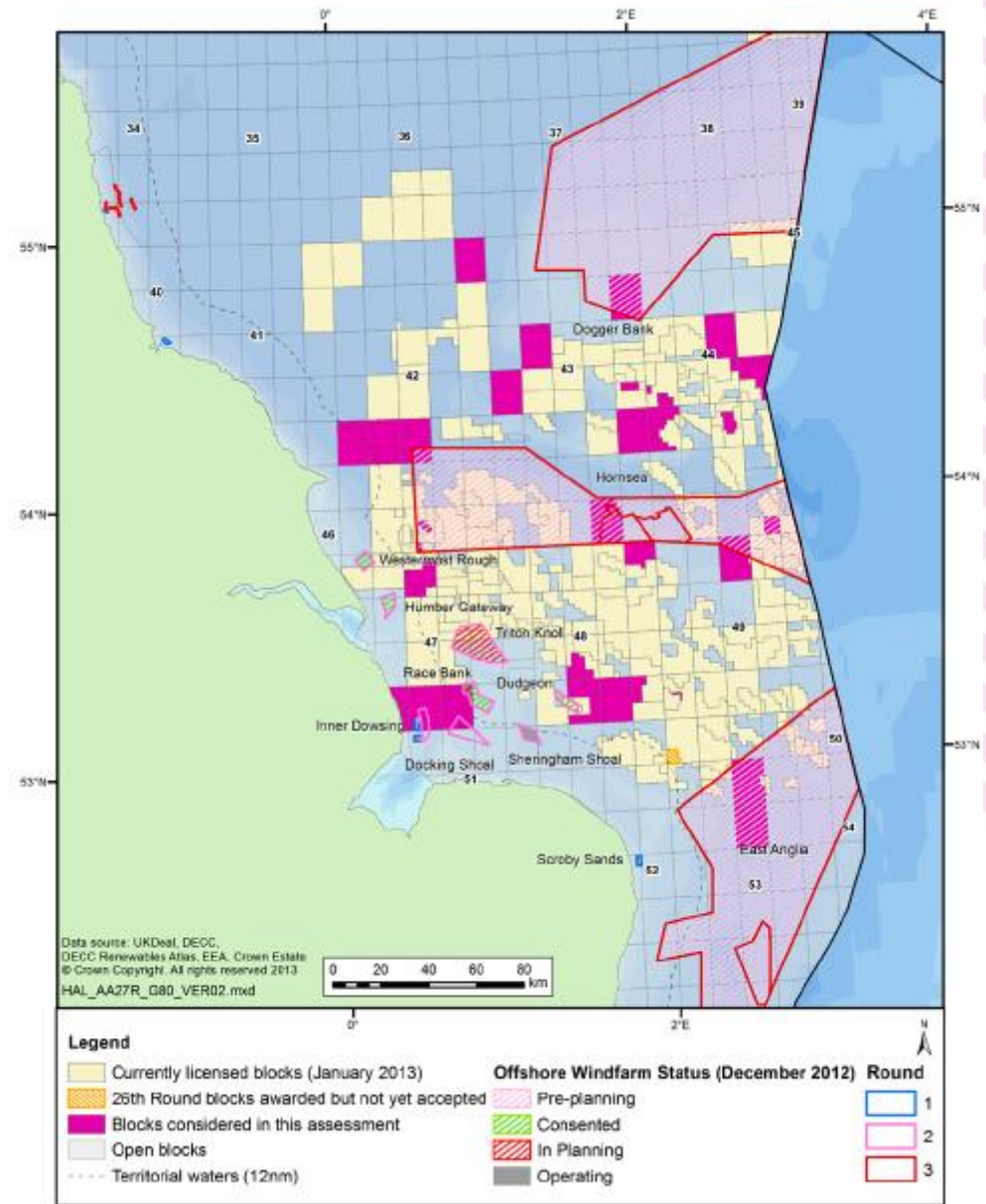


Figure 8.1: Offshore wind development in the southern North Sea



Conclusions of draft AA (DECC, 18th March 2013)

Taking account of all the matters discussed, the Secretary of State is able to grant consent to the plan/programme (as defined) under the Habitats Directive and award the licences covering Blocks 42/5, 43/16, 42/21, 42/22, 42/23, 43/10, 43/12, 43/20f, 43/25, 44/21c, 44/13, 44/16b, 44/16c, 44/18e, 44/19a, 44/23g, 47/3j, 47/3k, 47/8e, 47/22, 47/23, 47/24, 48/4b, 48/10c, 48/18c, 48/23c, 48/24, 48/25c, 49/4b, 49/8b, 49/21d, 53/3a, 53/8 (considered further in Sections 6-9). This is because there is certainty, within the meaning of the ECJ Judgment in the *Waddenzee* case, that implementation of the plan will not adversely affect the integrity of relevant European Sites, taking account of the mitigation measures that can be imposed through existing permitting mechanisms on the planning and conduct of activities.

10. Approach to Decommissioning Impacts



Delivering a New Energy

11. AOB

AOB

Design & Access Statement

Cable Statement

Works No. 11 Interconnection

EPS Licences – onshore & offshore

Safety Zone Statement

25/50 year repowering/decommissioning

PINS Transboundary Consultation

Outreach programme

P1/P2 Simultaneous Consultation

